



SANTA CLARA  
COUNTY PARKS



BFS LANDSCAPE ARCHITECTS + H.T. HARVEY & ASSOCIATES + BALANCE HYDROLOGICS + DAVID J. POWERS

# Coyote Canyon

## Interim Access Plan

Parks & Recreation Commission

March 6, 2018





# Presentation Overview

- Planning Purpose
- The Plan Document
- Interim Access (IA) Plan
- Recommended Public Access Option
- Natural Resource Management (NRM) Plan
- Next Steps



# Planning Purpose



## Understand

Existing conditions, opportunities, and constraints.



## Identify

Strategies and practices for maintaining and enhancing natural resources.



## Develop

Recommendations for limited public access and how to manage natural resources on the Property.



# Plan Document

## Interim Access Plan

Getting the Public on the Property

- Provides a recommended public access option
- Within a limited area of the Property

## Natural Resource Management Plan

Protect, Conserve and Enhance Natural Resources

- Evaluation of current management practices
- Adaptive management and monitoring program
- Grazing plan

## Mitigated Negative Declaration

Compliance

- Analyze potential impacts from:
  - NRM Plan on a programmatic level
  - IA Plan on a project level
- Impacts will be mitigated to a less-than-significant level



# Interim Access Plan



## **Limited Focus**

Focuses on the west side of Coyote Canyon (core of the property)



## **Balancing Nature**

Designed based on findings from NRM Plan



## **Recommended Alignment**

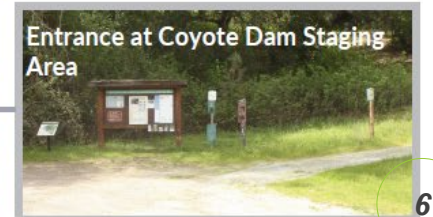
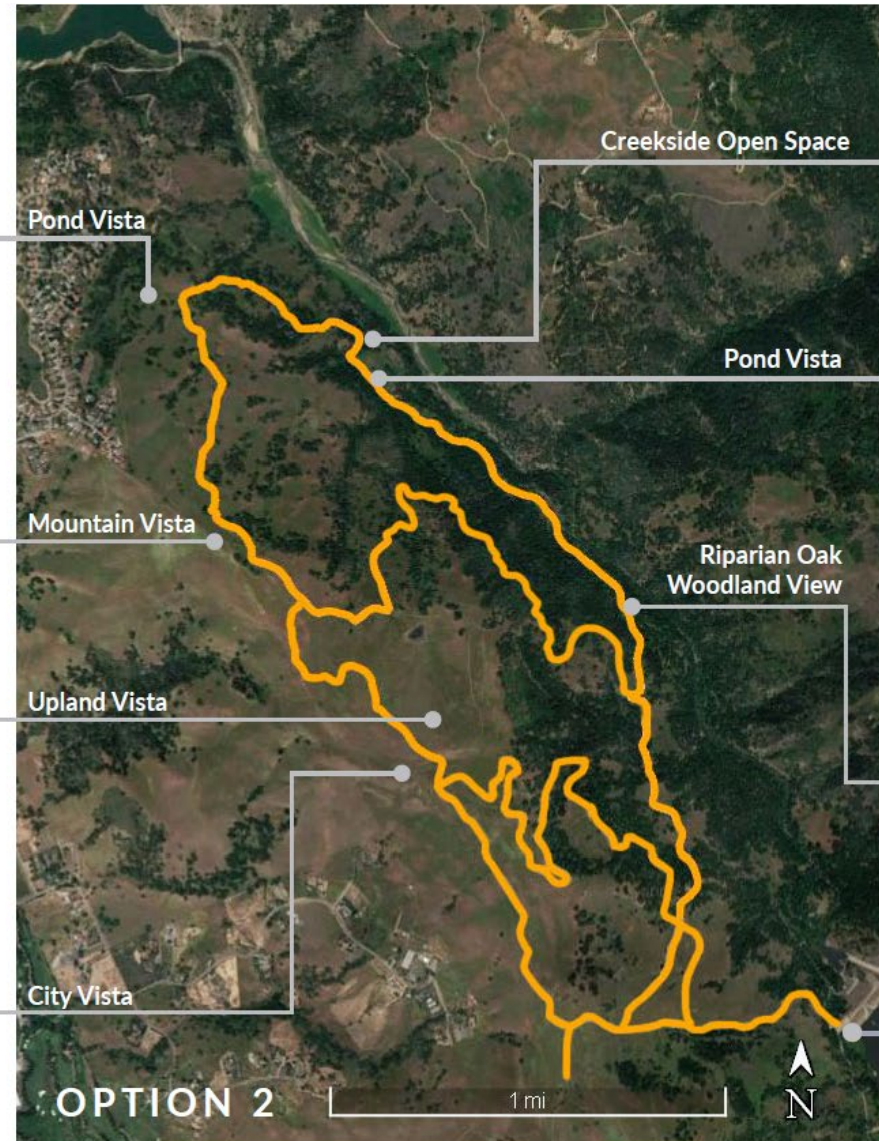
Provides loop trail connections for users and north/south patrol route for maintenance and operations



# Balancing Public Access and Natural Resources

## Recommended Public Access Alignment

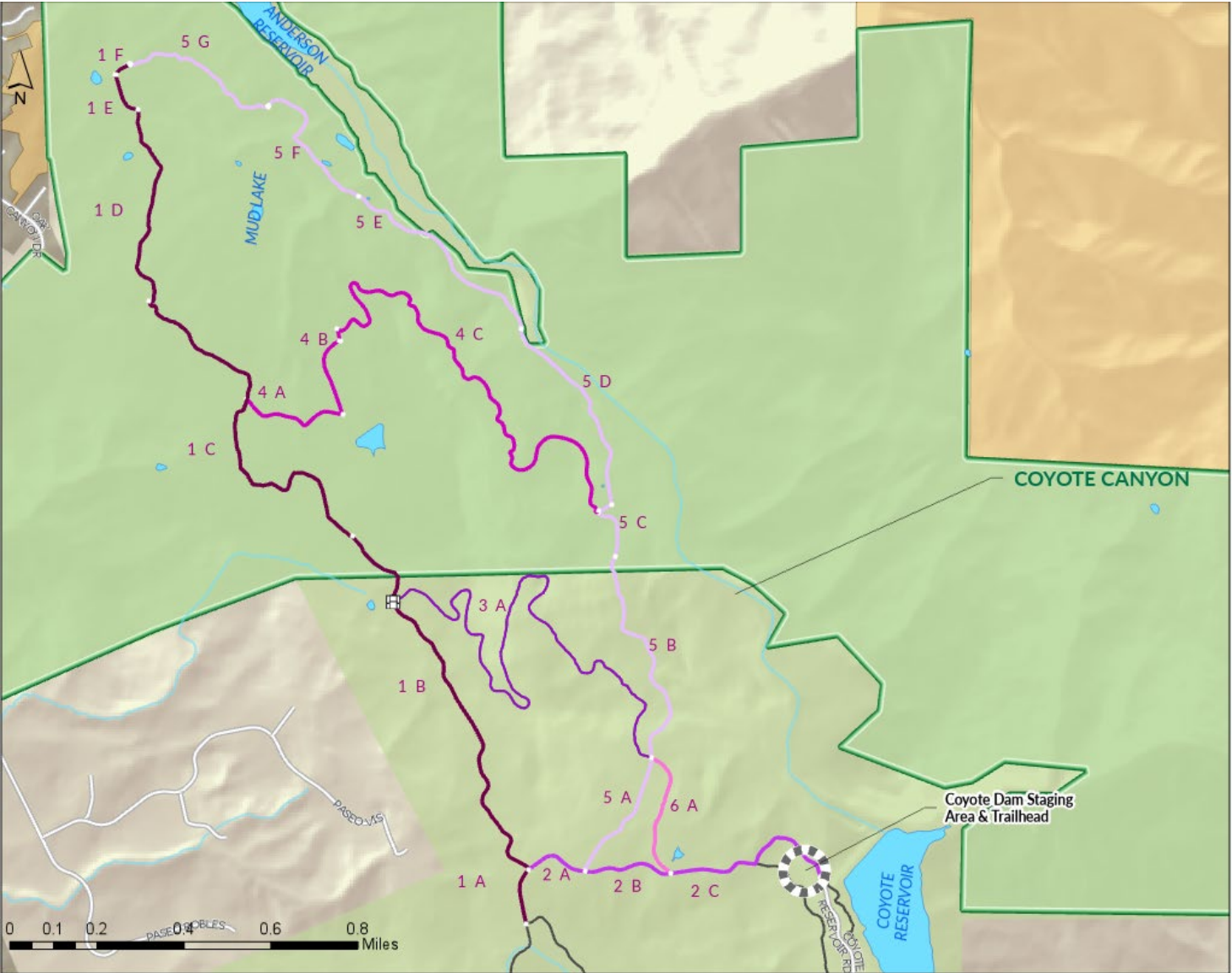
- Mountain Vistas
- Views of the City of Morgan Hill & Santa Cruz Mountains
- Accessible from the existing trail system in Coyote Lake – Harvey Bear Ranch County Park
- A majority of the recommended option uses the existing ranch road network





# Recommended Public Access Option: Proposed Trails

## Balancing Department Goals with Nature



- Coyote Ridge Trail
- Ed Willson Trail
- Harvey Bear Connector Trail
- Ojo de Agua Trail
- Woodland Valley Spur Trail
- Woodland Valley Trail
- Existing Trails not in IA Plan
- Coyote Canyon Boundaries
- Santa Clara County Parks
- Protected Lands
- Cities
- Public Roads

# NRM Plan



## **Identify Resources**

Detailed surveys and background document review performed by experts



## **Adaptive monitoring & management**

Strategies for monitoring & protection of sensitive plants & wildlife



## **Grazing Plan**

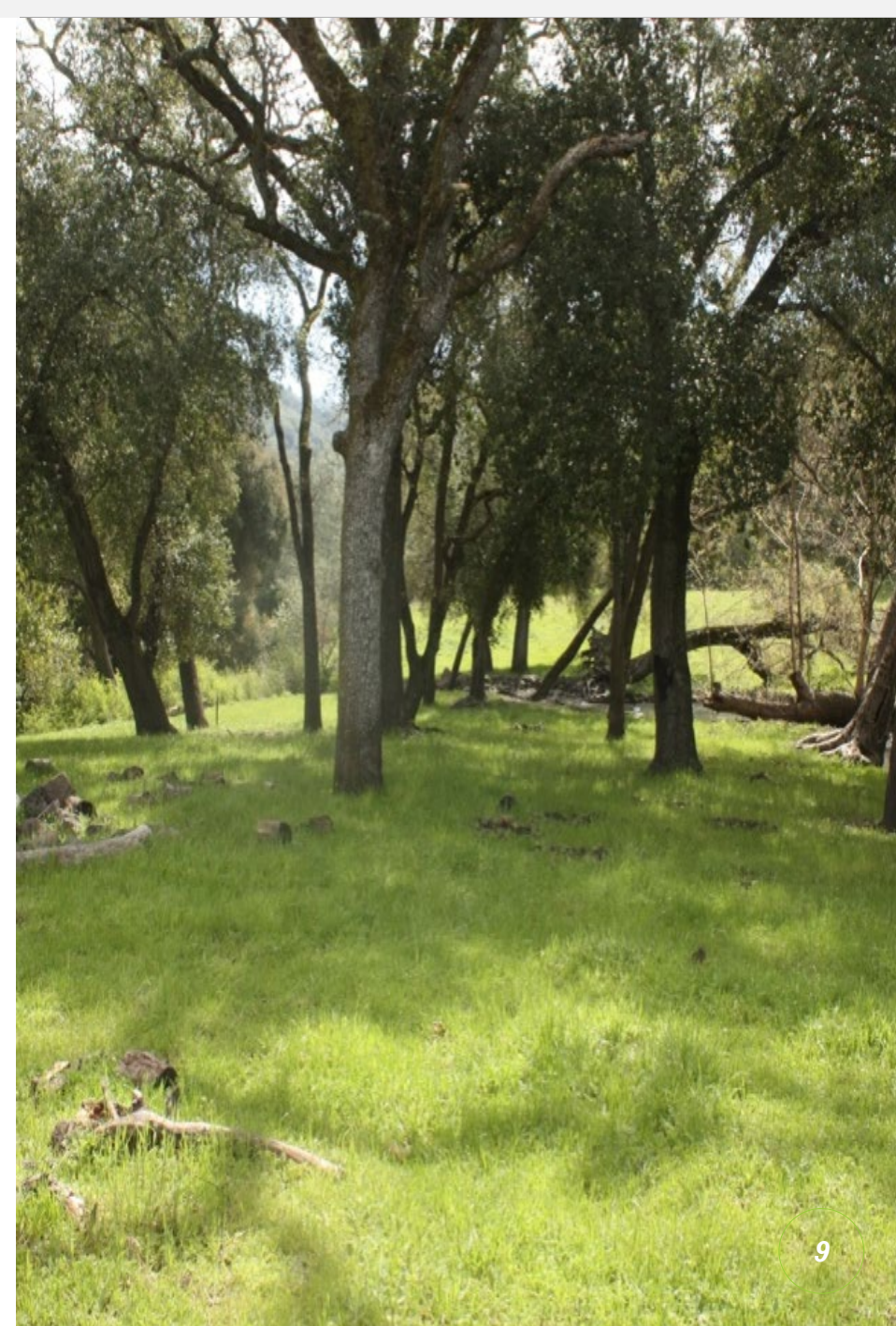
Use grazing for wildfire risk reduction & habitat enhancement





# NRM Plan Goals

- Monitor/protect occurrences of sensitive plants and communities
- Improve riparian habitat and water quality through selective cattle exclusion areas
- Monitor/protect oak woodlands
- Monitor/protect nesting birds, golden eagles, and wintering burrowing owls
- Monitor/manage invasive plants and wild pigs
- Consider habitat and species enhancements as staffing and funding allows





# Next Steps



## **Public Comment Period**

Release of the Mitigated Negative Declaration in Spring 2019



## **Board of Supervisor Sub-Committee**

Present Plan to Housing, Land Use, Environment, and Transportation (HLUET) Committee Spring 2019



## **Board of Supervisors**

The Plan and Mitigated Negative Declaration will be submitted for approval in Spring 2019







# Questions