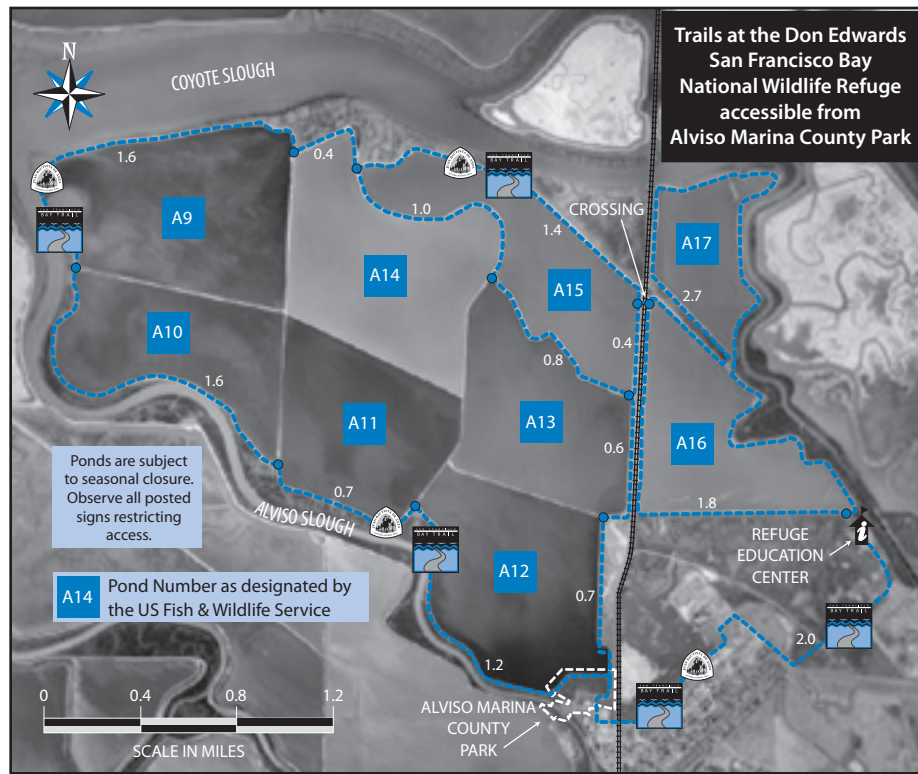


Alviso Marina County Park



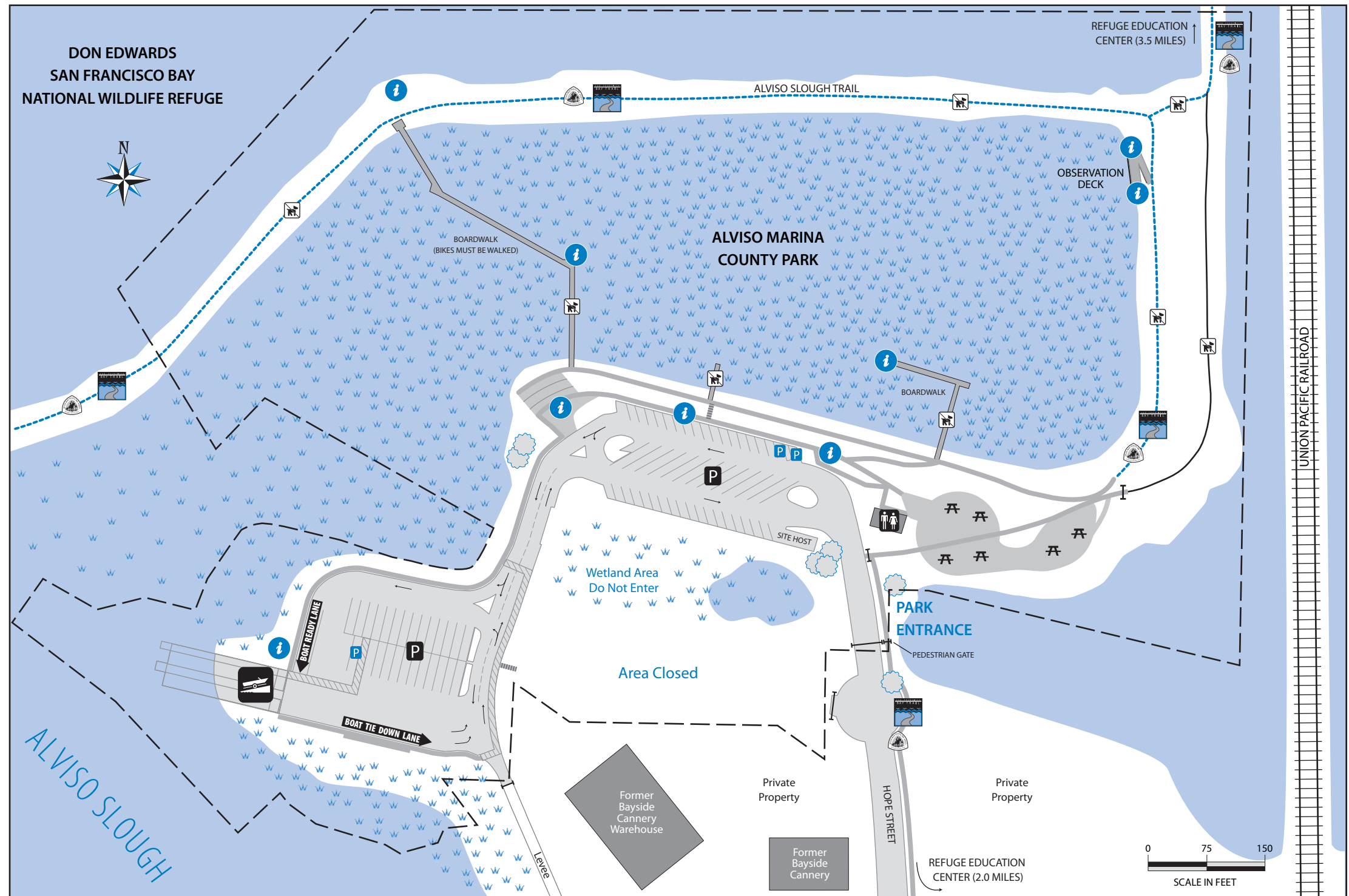
SANTA CLARA COUNTY PARKS



TAKE ONLY PHOTOGRAPHS... LEAVE ONLY FOOTPRINTS

Millions of people visit Santa Clara County's regional parks each year. Please help preserve the natural beauty of our parklands and ensure the safety of our visitors by complying with these general rules and any posted regulations.

- Vehicles:** Observe posted speed limits. Stay on paved roadways and in designated parking areas.
- Bicycles:** Bicycles are allowed on all trails and pathways within both the County Park and Wildlife Refuge. Bicycles must be walked on all boardwalks. ANSI/Snell approved helmets are mandatory for all bicyclists.
- Garbage:** Place in receptacles provided. Recycling is encouraged.
- Dogs/Pets:** Allowed on the pathways and picnic areas when controlled on a 6-foot (or less) leash at all times, but are prohibited on the trails, levees and boardwalks.
- Fires:** No fires on open ground or along shoreline.
- Alcohol:** Permitted in picnic areas only.
- Swimming:** Swimming is prohibited.
- Plants & Wildlife:** Leave plants and animals undisturbed. Collecting of plant specimens and animals is not allowed without a permit or license. Feeding and abandonment of feral cats and other animals is prohibited.
- Fishing:** Fishing only permitted from boats, no shore fishing allowed. License required for all persons 16 or older.
- Hunting:** Hunting prohibited in Alviso Marina County Park.
- Weapons:** Firearm possession permitted for transportation to and from legal hunting areas beyond park boundaries only. Air guns, archery equipment and paintball guns are strictly prohibited.
- Boating:** Launching of personal watercraft prohibited. Be aware of shifting shoals, strong currents, and tides. Avoid boating during floods. Beaching your boat on levees is prohibited. Do not leave your boat if stuck in the mud. Observe posted speed limits and closed areas. Charts can be obtained through www.noaa.gov or local retailer. Reference No. 18AHA18651. Emergency - Call 911 or USCG Channel 16



Ranger Station located in Milpitas at Ed R. Levin County Park (408)262-6980	Pathway (Pedestrian, Dog, & Bike Access)	County Park Boundary	Parking	Vegetated Wetland
Don Edwards San Francisco Bay National Wildlife Refuge Education Center (Alviso) (408)262-5513 Refuge Office (Newark) (510)792-0222	Trail (Pedestrian & Bike Access)	San Francisco Bay Trail	Disabled Parking Space	Open Water
Boardwalk (Pedestrian Access Only)	Juan Bautista de Anza National Historic Trail	Restroom	Picnic Table	Boat Launch
Service Road	Interpretive Panel	No Dogs Allowed	Gate	