

COYOTE HIGHLANDS - COYOTE CANYON

INTERIM PLANNING PROCESS

COMMUNITY MEETING #2

DRAFT RECOMMENDATIONS

County of Santa Clara

August 6, 2018



BFS LANDSCAPE ARCHITECTS + H.T. HARVEY & ASSOCIATES

MEETING AGENDA

1.	Open House	6:00 p.m.
2.	Welcome & Housekeeping	6:25 p.m.
3.	Presentation	6:30 p.m.
	Recap of Public Meeting #1	
	NRM Recommendations	← Q & A's
	Draft Public Access Option	← Q & A's
4.	Conclusion & Next Steps	7:35 p.m.

MEETING PURPOSE

WHAT ARE WE GOING TO SHARE?

01

Planning
Process

02

Recap of
Public
Meeting #1

03

Draft NRM
Recommendations

04

Draft Public
Access
Alignment

05

Next Steps

PLANNING TERMS

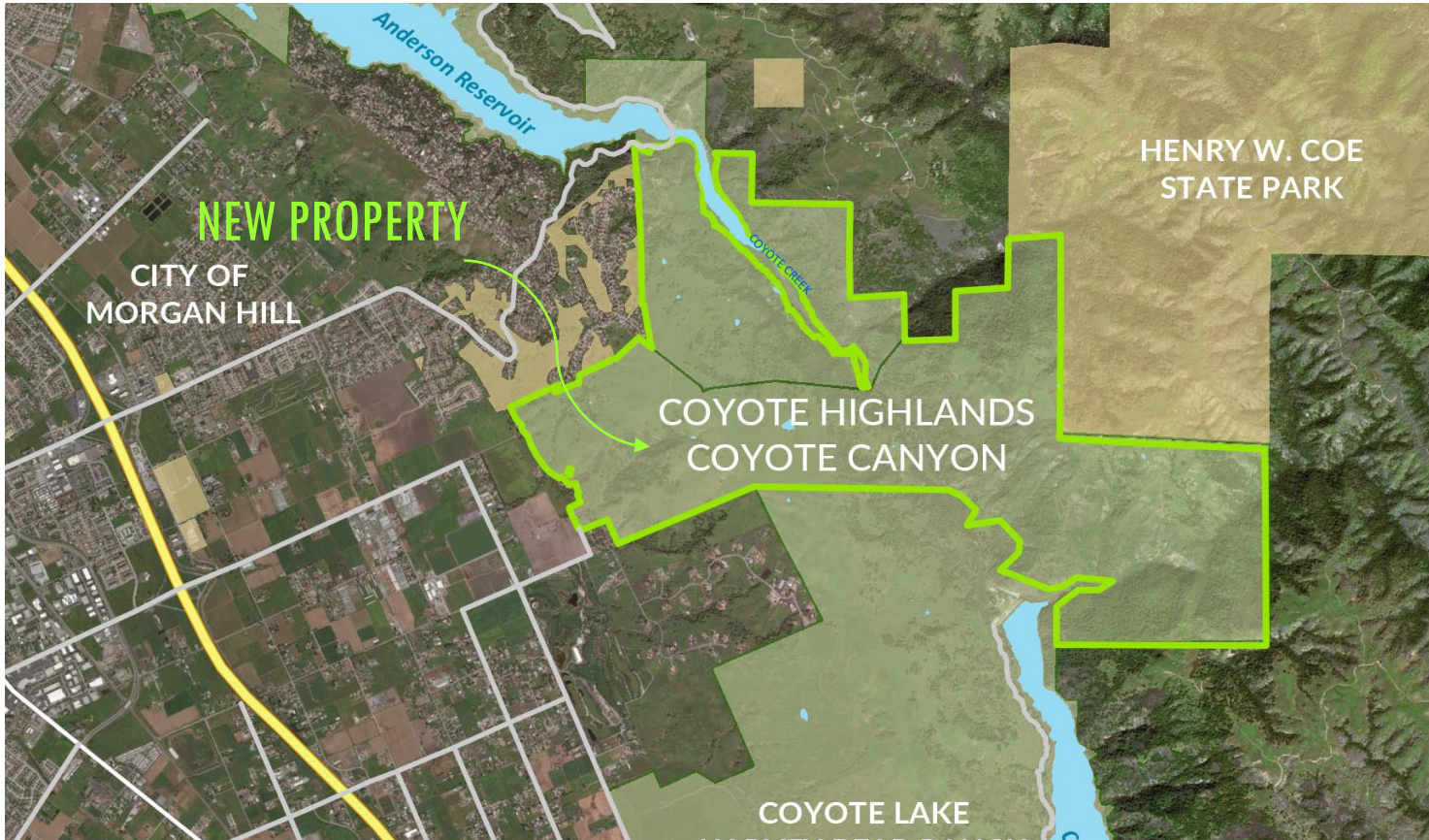
BOS	Santa Clara County Board of Supervisors
CEQA	California Environmental Quality Act
CHCC	Coyote Highlands – Coyote Canyon
HLUET	Santa Clara County Housing, Land Use, Environment and Transportation Committee
NRM	Natural Resource(s) Management
MND	Mitigated Negative Declaration
PRC	Santa Clara County Parks & Recreation Commission
RDM	Residual Dry Matter



**MEETING PURPOSE:
WHY ARE WE HERE?**

Community engagement

- Share what we have learned
- Reflect / address community concerns



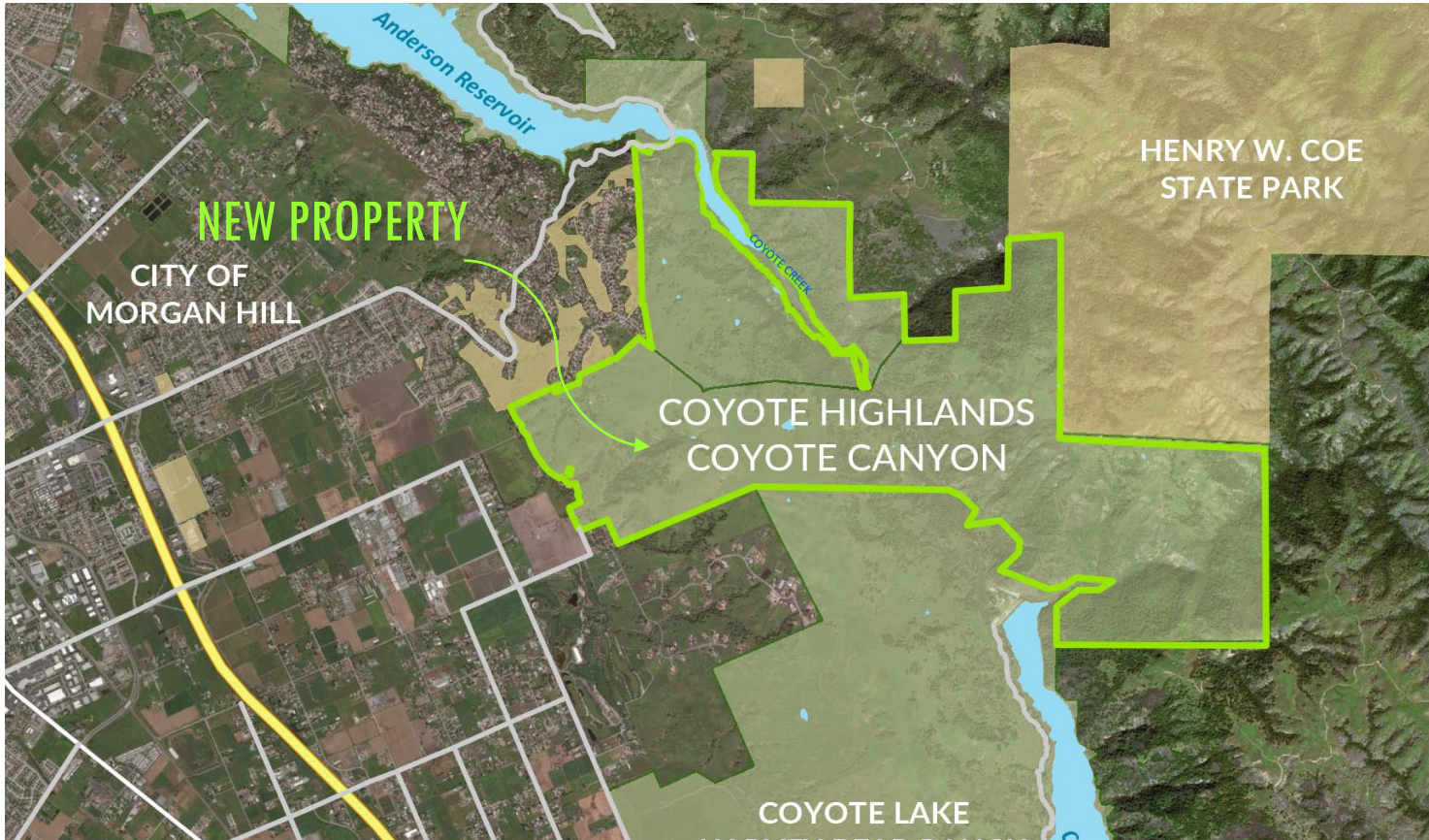
PLANNING PURPOSE

1. Understand existing conditions, opportunities and constraints
2. Develop recommendations for public access
3. Identify strategies and practices for maintaining and enhancing natural resources
4. Develop a grazing plan for rangeland management

PLANNING PROCESS TO DATE



* Additional Opportunities for Public Comment



RECAP OF PUBLIC MEETING #1

WHAT DID WE SHARE WITH YOU?

Topics Discussed:

- Existing Conditions
- History and Cultural Features
- Geography
- Biological Resources
- Public Access and Trail Alignment Options



RECAP OF PUBLIC MEETING #1

WHAT DID YOU SHARE WITH US?

Important considerations:

- Sensitive habitats and species
- Proximity of public use near residential areas (fire, access, safety)
- Creating safe trails for multi-use
- Creating shorter loop option(s) within the preferred access option



DRAFT RESOURCE MANAGEMENT RECOMMENDATIONS

BACKGROUND OF RESOURCE MANAGEMENT WORK

1. Encompasses entire property
2. Focused resource surveys
3. Management zones
4. NRM plan / best practices
5. Grazing Plan



Draft Natural Resource Management Zones

July 2018

 Coyote Highlands-Coyote Canyon

 Natural Resource
Management Zones

 Existing Roads and Trails

Proposed Public Access Trail Alignment

 Planned Trail

 Planned Road

 Existing Road

Resource Survey

 200-foot Vegetation Survey Area

VHP Land Cover Types

 Mixed Oak Woodland


 California Annual Grassland


 Northern Coastal Scrub /
Diablan Sage Scrub


 Northern Mixed Chaparral /
Chamise Chaparral


 Reservoir

 Mixed Riparian Woodland & Forest

 Mixed Serpentine Chaparral /
Serpentine Rock Outcrops


 Pond/Seasonal Wetland

 Serpentine Bunchgrass

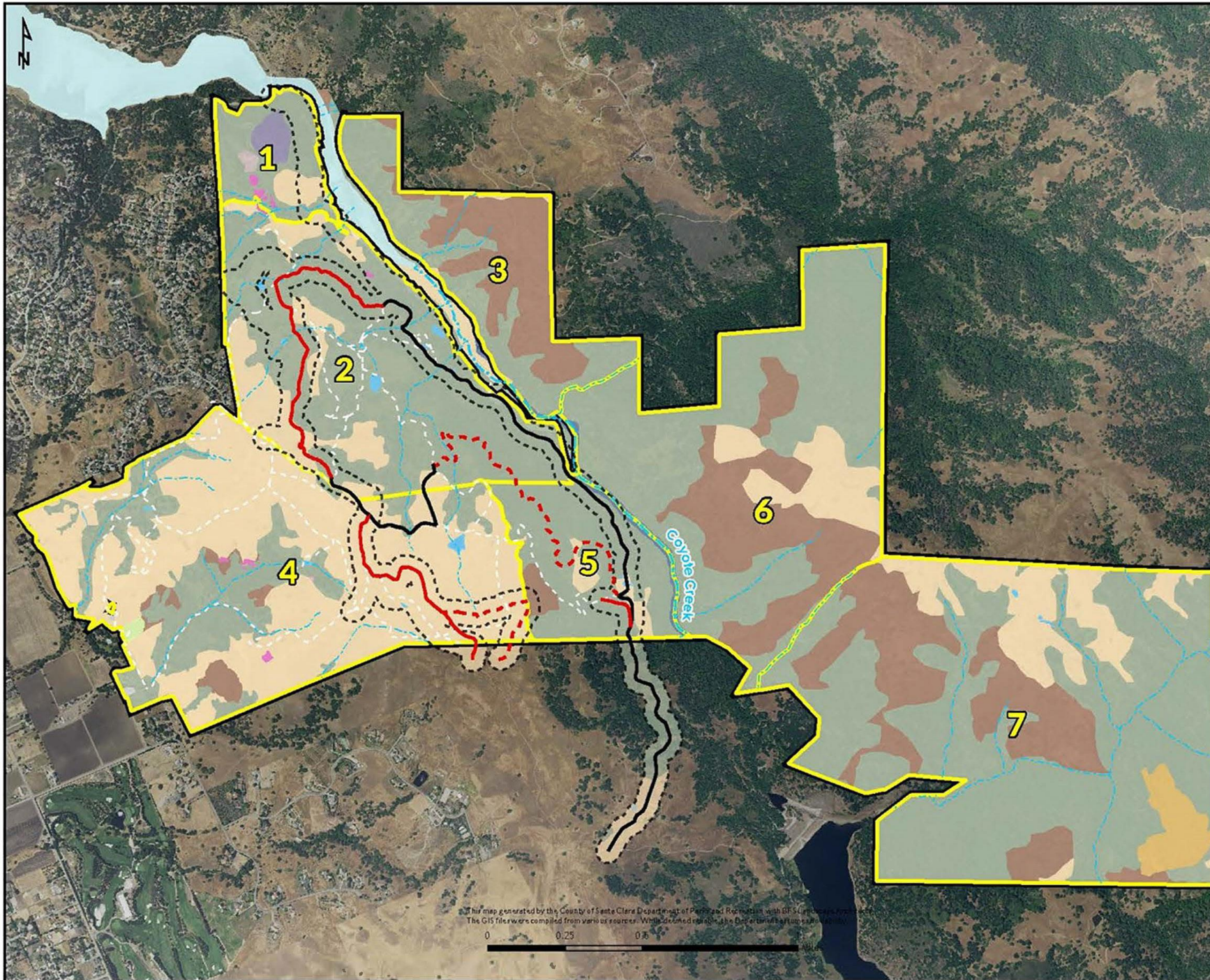
 Rural Residential

 Ornamental Woodland

 Urban/Suburban

 Serpentine Rock Outcrops

 Stream



This map generated by the County of Santa Clara Department of Parks and Recreation with GIS software provided by H.T. Harvey & Associates. The GIS files were compiled from various sources. While no claims are made by the Department for the accuracy of the data, the Department is not responsible for any errors or omissions.

DRAFT RESOURCE MANAGEMENT RECOMMENDATIONS

1. Monitor / protect occurrences of sensitive plants and communities
2. Exclude cattle from creek to protect water quality and riparian habitat
3. Monitor / protect oak woodlands
4. Survey for and monitor California red-legged frogs, California tiger salamanders, and western pond turtles; enhance pond habitat



DRAFT RESOURCE MANAGEMENT RECOMMENDATIONS

5. Monitor / protect nesting golden eagles and wintering burrowing owls
6. Protect nesting birds during work activities
7. Consider enhancements for roosting bats and nesting barn owls
8. Monitor / manage invasive plants
9. Monitor / control feral pigs



GRAZING PLAN

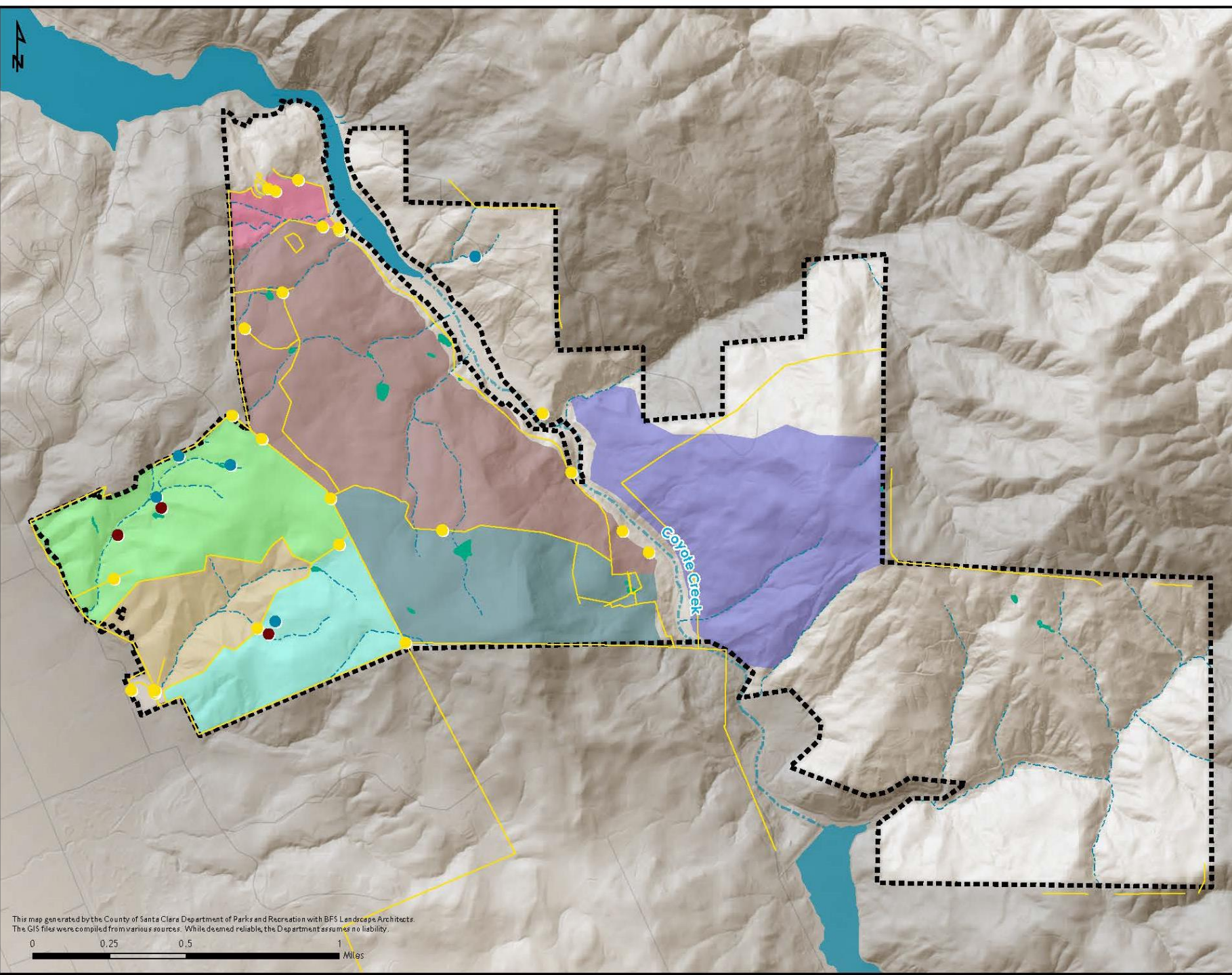
Objectives:

- Upland habitat management
- Riparian and creek habitat protection and enhancement
- Wildfire risk reduction
- Invasive plant management



Draft Grazing Management Areas

July 2018



This map generated by the County of Santa Clara Department of Parks and Recreation with BFS Landscape Architects.
The GIS files were compiled from various sources. While deemed reliable, the Department assumes no liability.

0 0.25 0.5 1 Miles

GRAZING PLAN

Current approach appropriate with minor modifications:

- Establish performance standards (Residual Dry Matter [RDM] targets)
- Utilize standard guidelines for monitoring and adaptive management
- Add support infrastructure (fencing, water sources, mineral blocks)



GRAZING PLAN: FIRE SAFETY

The Grazing Plan includes:

- Keep vegetation down in areas adjacent to residential neighborhoods
- Strategically locate salt / nutrient supplements and water to focus grazing
- Perform annual survey (late March) to assess grazing performance and, if necessary, adapt management approach



An aerial photograph of a rural landscape featuring rolling green hills, a small town with houses, and a pond. The text is overlaid on the image.

**DRAFT RESOURCE
MANAGEMENT
RECOMMENDATION**

QUESTIONS/COMMENTS



DRAFT PREFERRED PUBLIC ACCESS RECOMMENDATION



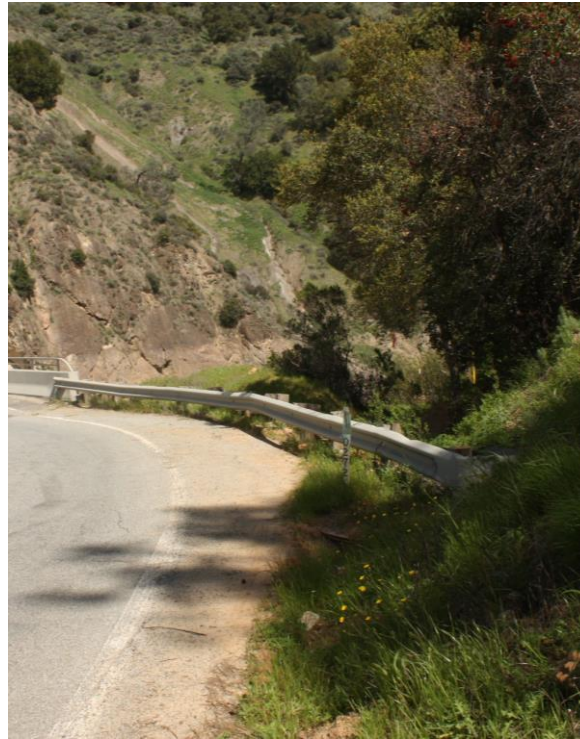
PUBLIC ACCESS ALIGNMENT OPTION #1

CONCEPT

North/South trail along
Coyote Creek from
Coyote Lake – Harvey
Bear Ranch County Park
to East Dunne Avenue



1. No parking on East Dunne Ave
2. Bridge crossing
3. Narrow road with cliff on east side
4. Parking ½ mile away
5. No existing trail connection



OPTION 1 DETERMINATION

Feasible, but highly constrained.

Not recommended.

PUBLIC ACCESS ALIGNMENT OPTION #3

CONCEPT

Development of staging area at Ranch Complex at East Dunne Avenue, with access connecting south to Option #2



1. Difficult to enter and exit property off of E. Dunne Ave.
2. Limited water supply
3. Serpentine soils



OPTION 3 DETERMINATION

Likely feasible with additional study needed.
Not recommended at this time.

**PUBLIC ACCESS
ALIGNMENT OPTION
#2**

CONCEPT

Loop trail connecting to
Coyote Lake – Harvey
Bear Ranch County Park



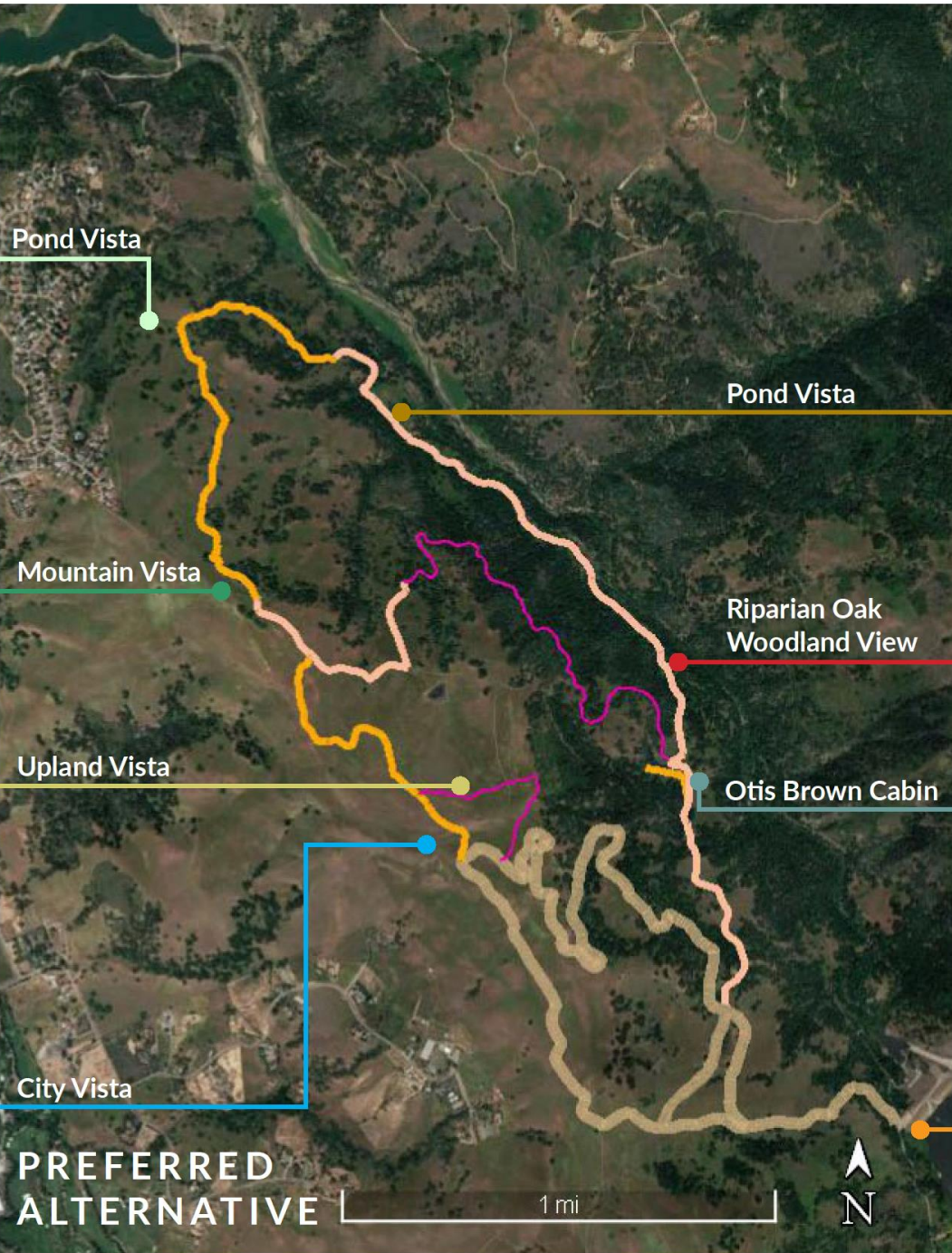
1. Mountain Vistas
2. View of the City of Morgan Hill and the Santa Cruz Mountains
3. Accessible from the Ed Willson Trail
4. Mostly existing infrastructure



OPTION 2 DETERMINATION

Feasible with relatively moderate construction needed to open. Meets public need, minimizes impacts.

Recommended Option.



Draft Recommended Public Access Option & Service Roads Map

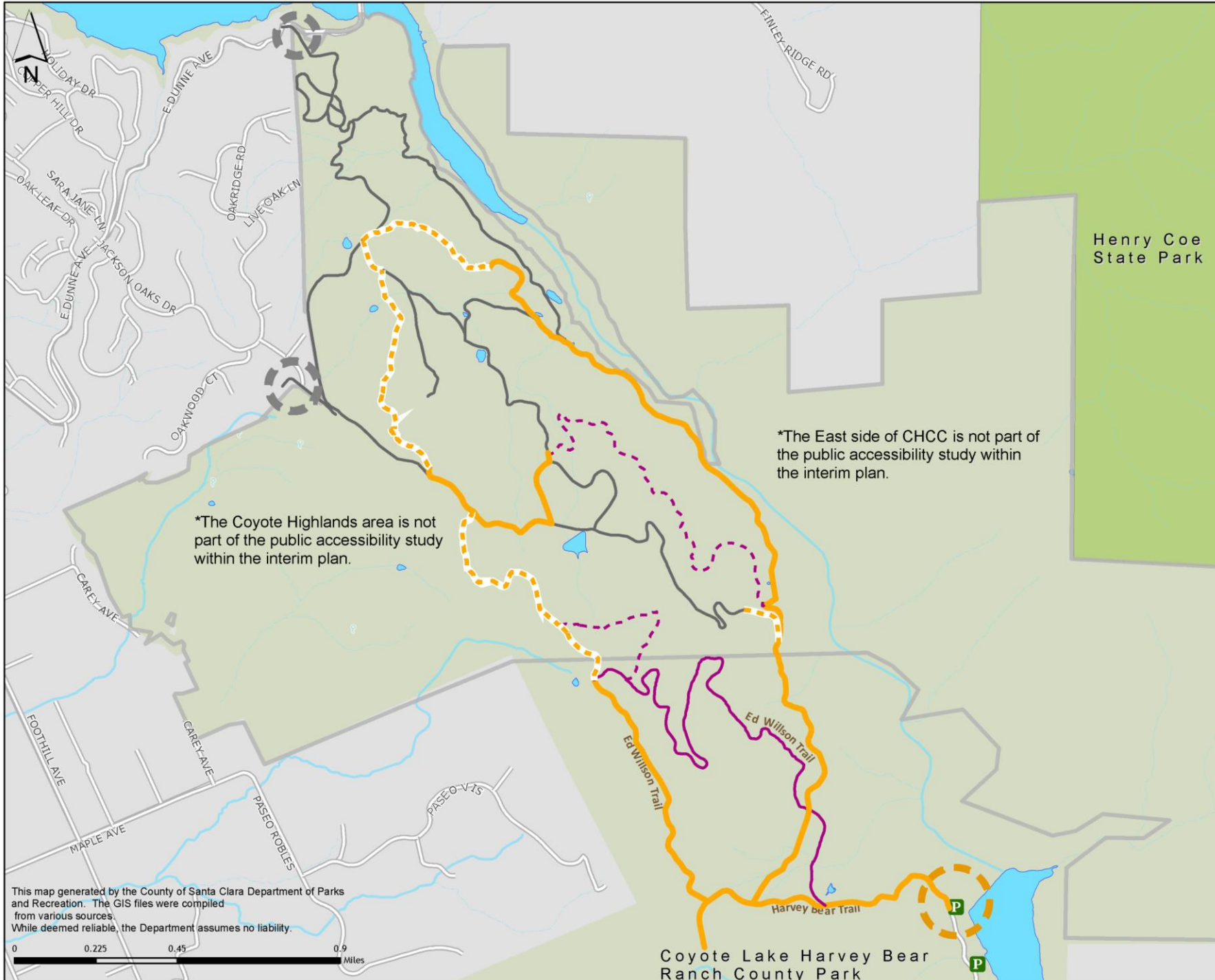
July 23, 2018

Recommended Options

- Planned Road (Service Width)
- Planned Trail (Single Track)
- Existing Road (Service Width)
- Service Road (No Public Access)
- Public Access to Trail
- County Parks & Emergency Services Access Only

Existing County Park Infrastructure

- Trail
- Service Road
- P** Trailhead with Parking Lot
- Plan Study Area
- Santa Clara County Parks
- California State Parks



*The Coyote Highlands area is not part of the public accessibility study within the interim plan.

*The East side of CHCC is not part of the public accessibility study within the interim plan.

This map generated by the County of Santa Clara Department of Parks and Recreation. The GIS files were compiled from various sources. While deemed reliable, the Department assumes no liability.

0 0.225 0.45 0.9 Miles

Coyote Lake Harvey Bear
Ranch County Park



ENVIRONMENTAL REVIEW



The California Environmental Quality Act (CEQA) requires certain projects and plans to undergo environmental review.



A Mitigated Negative Declaration (MND) will likely be prepared.



The MND will incorporate mitigation measures to avoid or mitigate significant impacts.

NEXT STEPS

- Prepare draft plan document
- Conduct environmental review
- Presentation to PRC (Fall 2018)
- Presentation to HLUET (late Fall 2018)
- Recommendation for BOS adoption (late Fall 2018)





QUESTIONS



CONTACT

Cherise Orange

408.355.2228

Cherise.orange@prk.sccgov.org

Jeremy Farr

408.355.2360

Jeremy.farr@prk.sccgov.org

