

COYOTE HIGHLANDS - COYOTE CANYON

INTERIM PLANNING PROCESS

COMMUNITY INPUT MEETING

County of Santa Clara
June 4, 2018



BFS LANDSCAPE ARCHITECTS + H.T. HARVEY & ASSOCIATES



PRESENTATION OUTLINE

01

Planning
Process

02

Existing
Conditions

03

Biological
Resources

04

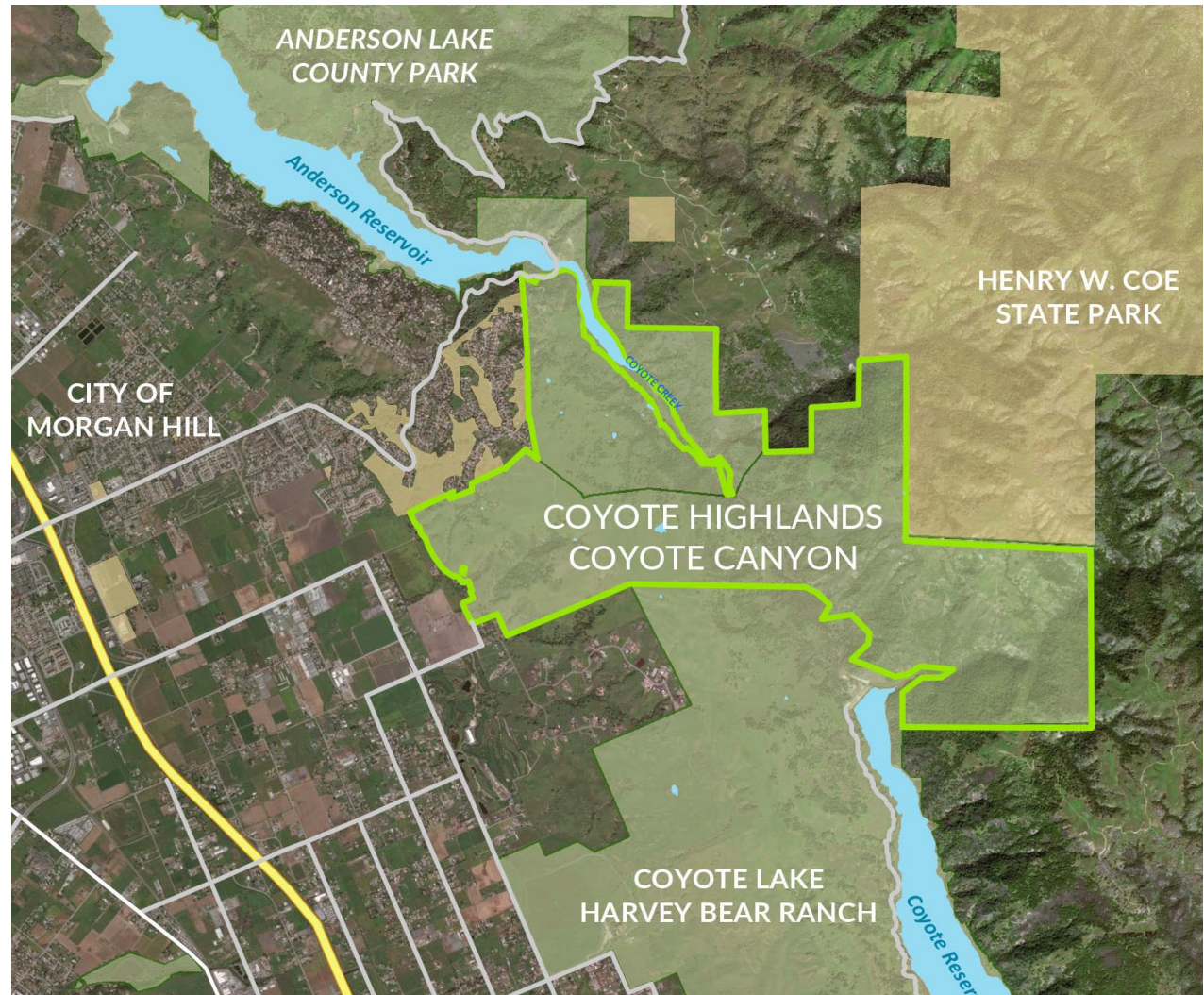
Public Access
Alignment &
Constraints

05

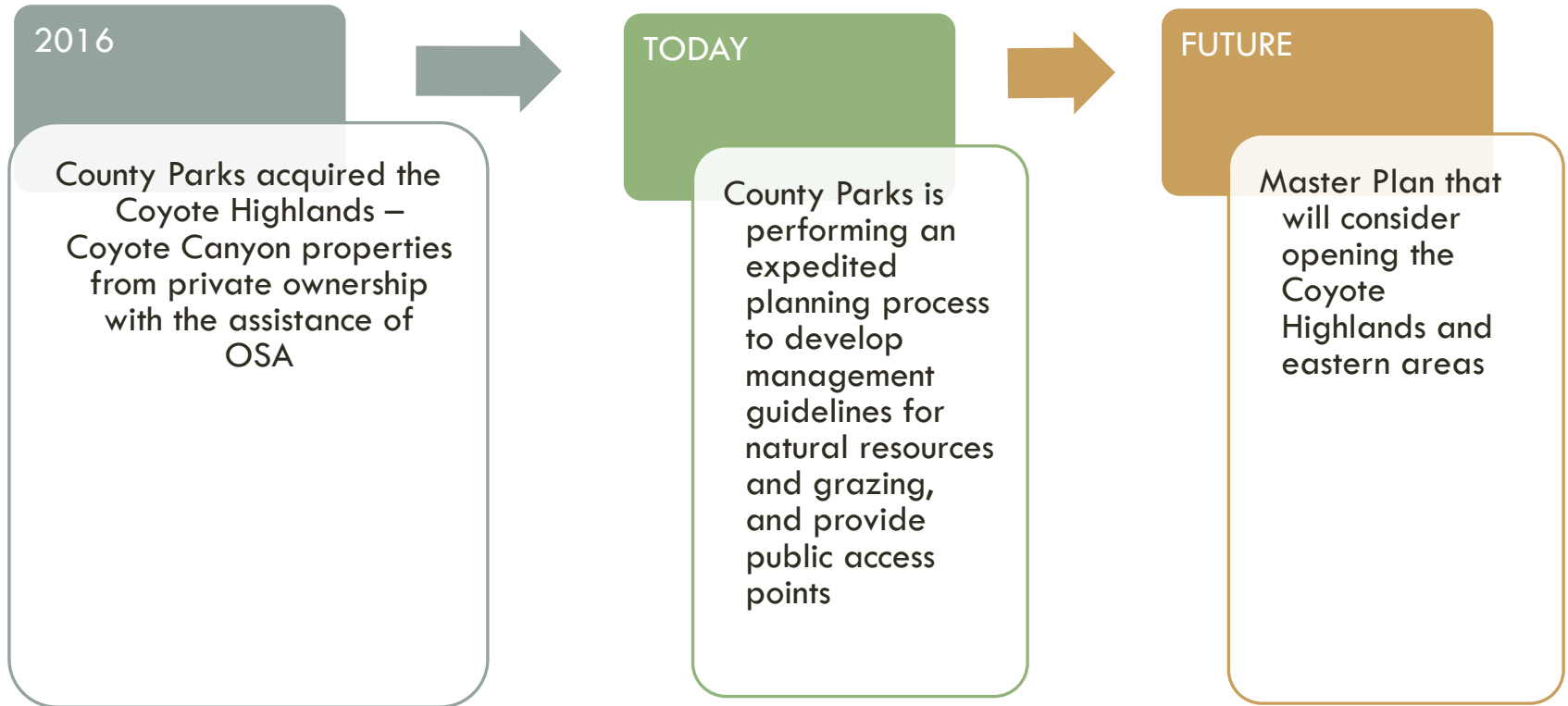
Next Steps

PROPERTY OVERVIEW

- County Parks acquired in 2016, including grant from OSA
- Properties link Anderson and Coyote Lake – Harvey Bear Ranch
- Countywide Trails Master Plan (1995) includes Bay Area Ridge Trail through the site
- Properties include 2,753 acres of land and miles of existing ranch roads



PLANNING PROCESS



PLANNING NEEDED

1. Understand the existing conditions, opportunities and constraints to Parks Department management
2. Develop informed design recommendations for public access
3. Identify goals for maintaining and enhancing natural resources
4. Develop a grazing plan to identify infrastructure and improve rangeland management



RESOURCE MANAGEMENT

1. Landscape-level review of natural resources on the entire property
2. Focused surveys along proposed trail alignment to avoid impacts to sensitive species
3. Will establish standards, monitoring guidelines, and implementation measures
4. Focused on both short- and long-term management of habitat



GRAZING PLAN

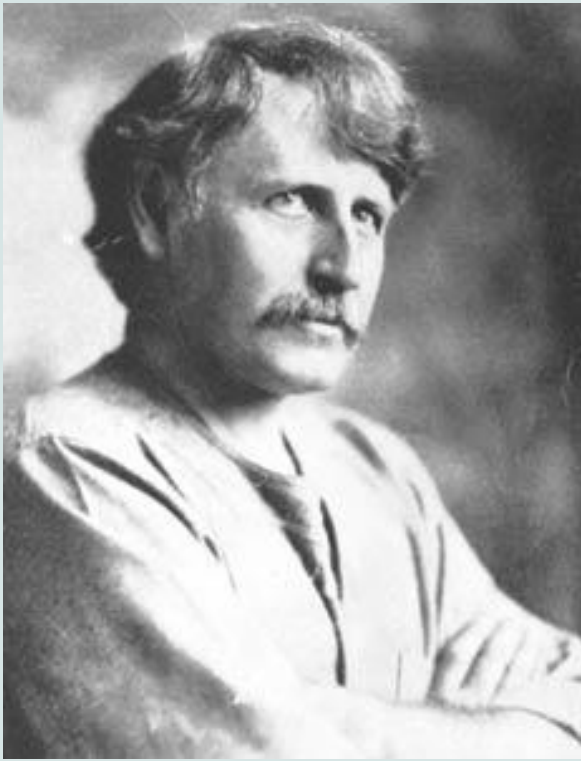
1. Required by the Santa Clara County Parkland Range Management Policy
2. Existing grazing and infrastructure throughout the property with ~131 pairs of cattle (cow & calf)
3. Plan will provide prescriptions for grazing management to meet natural resource objectives



EXISTING CONDITIONS

1. History and Cultural Features
2. Geographic Features
3. Access and Circulation





HISTORY AND CULTURAL FEATURES



GEOGRAPHIC FEATURES

1. Gently rolling uplands
2. Riparian lowlands
3. Steep slopes
4. Creek

BIOLOGICAL RESOURCES

Resource Surveys Performed

- Vegetation Mapping
- Surveys / Habitat Assessments for plants, reptiles, amphibians, birds and mammals
- Restoration / Enhancement Needs and Opportunities

Upcoming Resource Surveys

Identification of Natural Resources Management Zones

- Using property lines, topography, dominant vegetation types and service road access




Natural Resource Management Zones

April 17, 2018

 Coyote Highlands-Coyote Canyon

 Natural Resource Management

 Existing Roads and


Proposed Public Access Trail Alignment

 Planned Trail

 Planned Road

 Existing Road

Resource Survey

 200-ft Survey Area

VHP Land Cover Types

 Serpentine Rock Outcrops

 Serpentine

 Northern Mixed Chaparral / Serpentine Rock Outcrops

 Mixed Oak Woodland

 California Annual Grassland

 Northern Mixed Chaparral / Chamise Chaparral

 Northern Coastal Scrub / Diablan Sage Scrub

 Rural Residential

 Urban/Suburban

 Willow Riparian Forest and Scrub

 Pond/Seasonal Wetland

 Reservoir

This map generated by the County of Santa Clara Department of Parks and Recreation with GIS Landscape Architect
The GIS files were compiled from various sources. While deemed reliable, the Department assumes no liability.

0 0.25 0.5 Miles

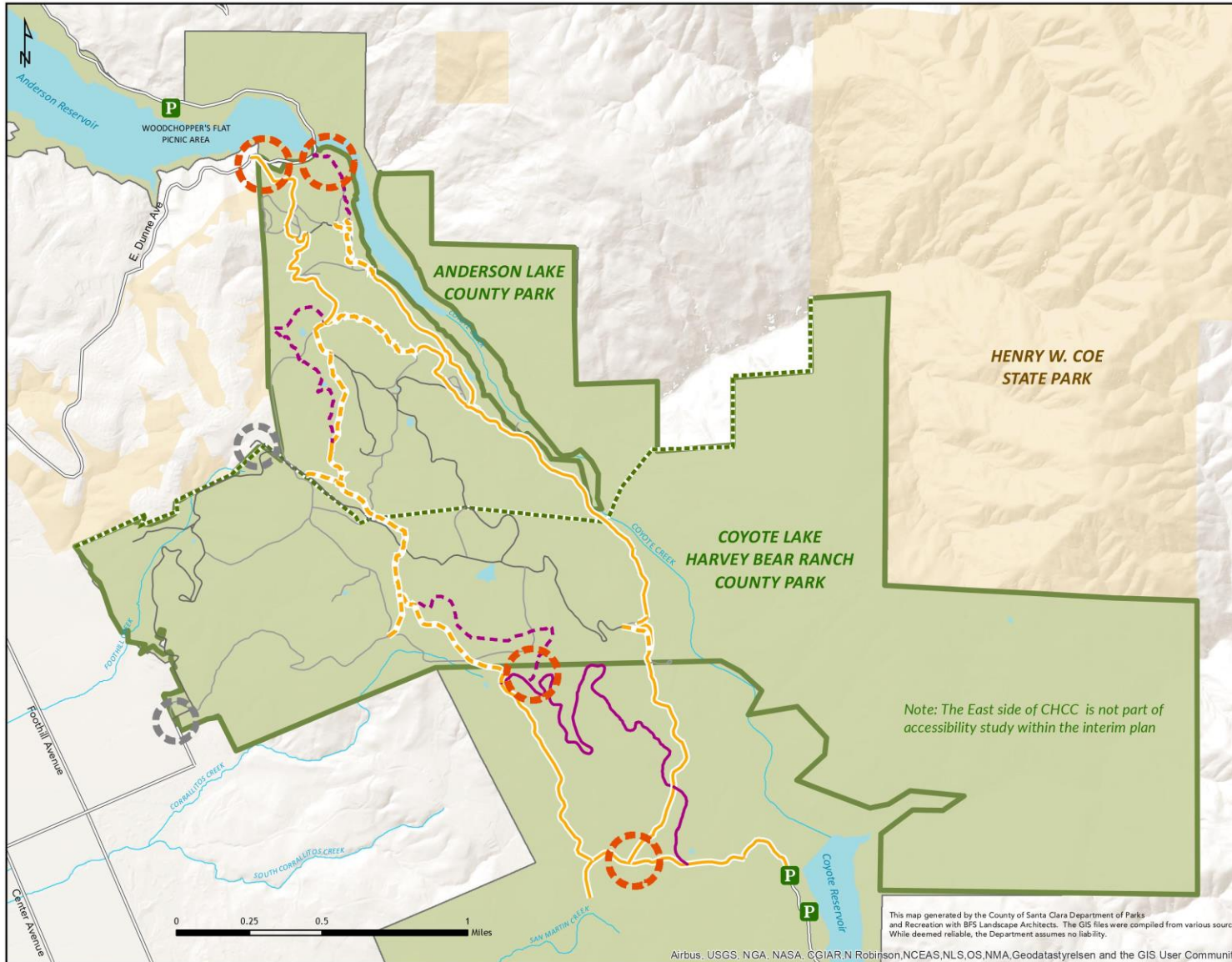
BIOLOGICAL RESOURCES

Grazing Management Plan

- Required by the Santa Clara County Parkland Range Management Policy
- Existing grazing and infrastructure throughout the property with ~131 pairs of cattle (cow & calf)
- Plan will provide prescriptions for grazing management to meet natural resource objectives



04 ACCESS AND CIRCULATION



Coyote Highlands
Coyote Canyon
Interim Management Plan

Access & Circulation Map

May 25, 2018

Proposed Public Access Trail Alignment

- Existing Road (Service Width)
- Planned Road (Service Width)
- Existing, Yes, Existing Trail
- Planned Trail (Single Track)

Proposed Service Roads

- Primary Service Roads
- Secondary Service Roads

Trailhead with Parking Lot

Plan Study Area

Santa Clara County Parks

Service Access

Public Access to Trail

Note: The East side of CHCC is not part of accessibility study within the interim plan

This map generated by the County of Santa Clara Department of Parks and Recreation with BFS Landscape Architects. The GIS files were compiled from various sources. While deemed reliable, the Department assumes no liability.

Airbus, USGS, NGA, NASA, CGIAR, N Robinson, NCEAS, NLS, OS, NMA, Geodatastyle, nren and the GIS User Community

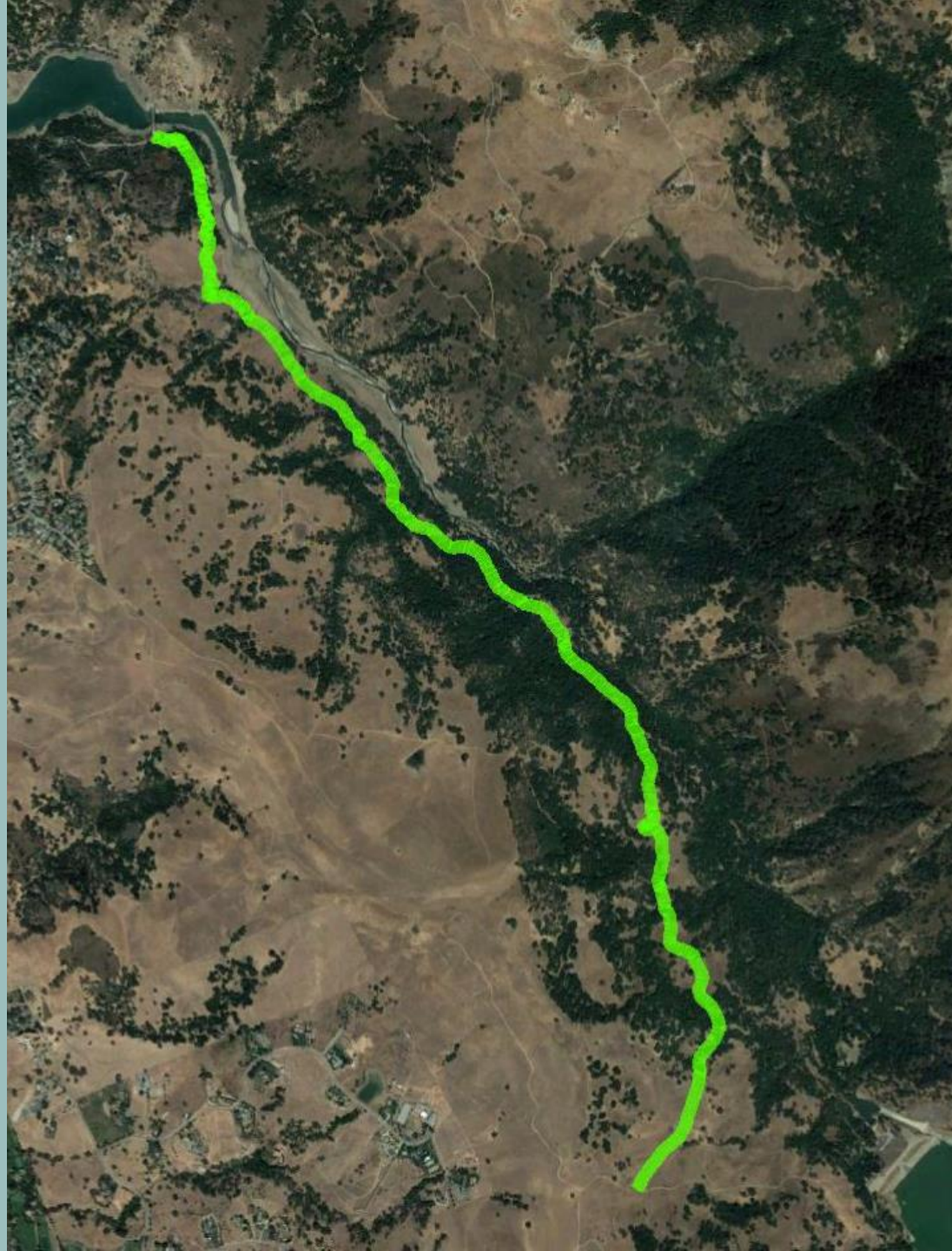


PUBLIC ACCESS ALIGNMENT OPTIONS

Option 1: North / South Trail along creek from Coyote Lake - Harvey Bear County Park to East Dunne Avenue

Option 2: Loop Trail from Coyote Lake - Harvey Bear County Park into Coyote Highlands / Coyote Canyon and back to Coyote Lake

Option 3: Development of staging area at Ranch Complex at East Dunne Avenue, with access connecting south to Option Two





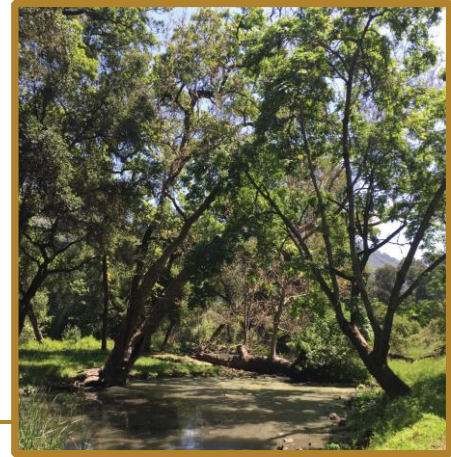
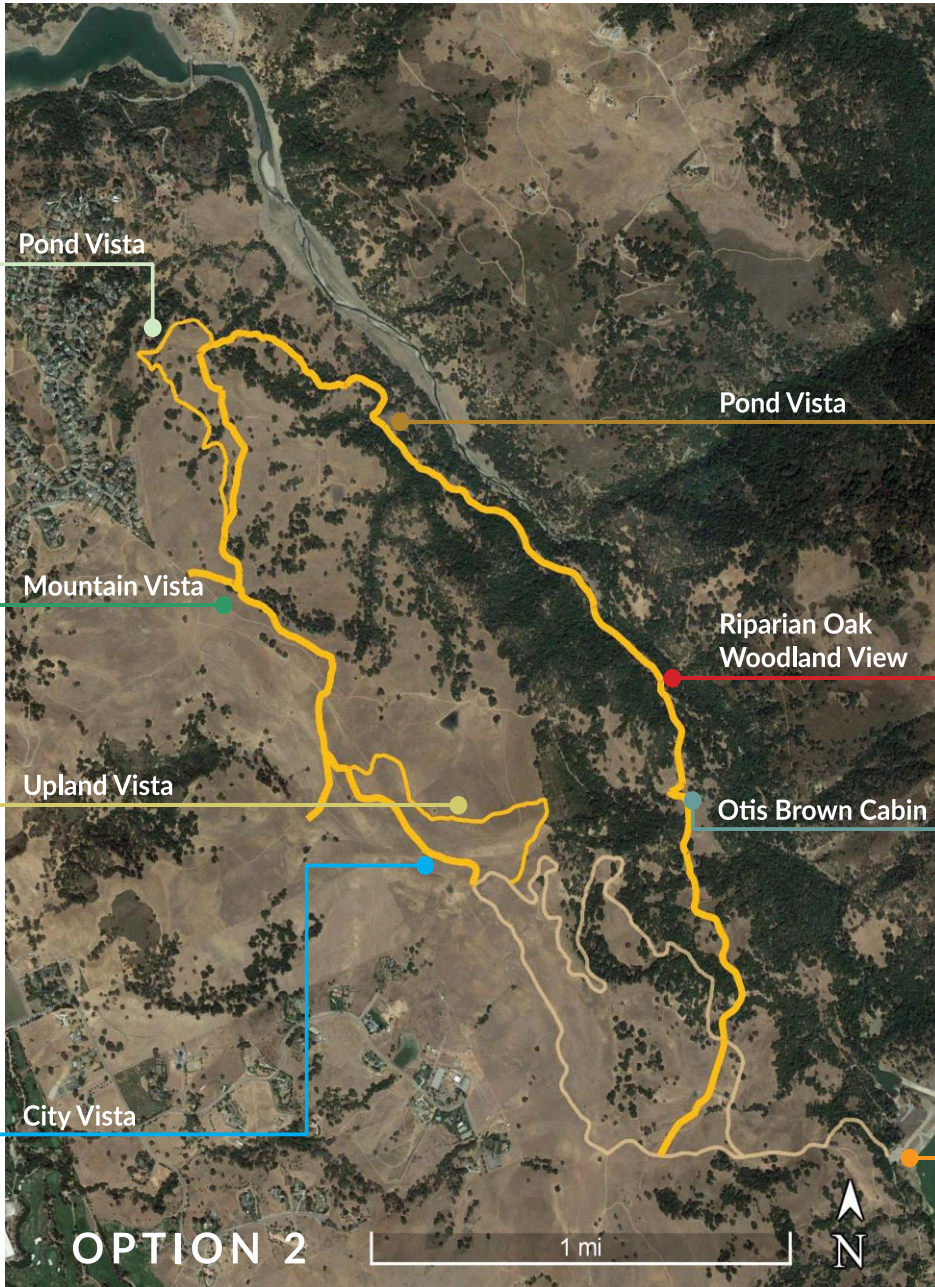
PUBLIC ACCESS ALIGNMENT OPTIONS

Option 1: North / South Trail along creek from Coyote Lake - Harvey Bear County Park to East Dunne Avenue

Option 2: Loop Trail from Coyote Lake - Harvey Bear County Park into Coyote Highlands / Coyote Canyon and back to Coyote Lake

Option 3: Development of staging area at Ranch Complex at East Dunne Avenue, with access connecting south to Option Two





Entrance at Ed Wilson Trail

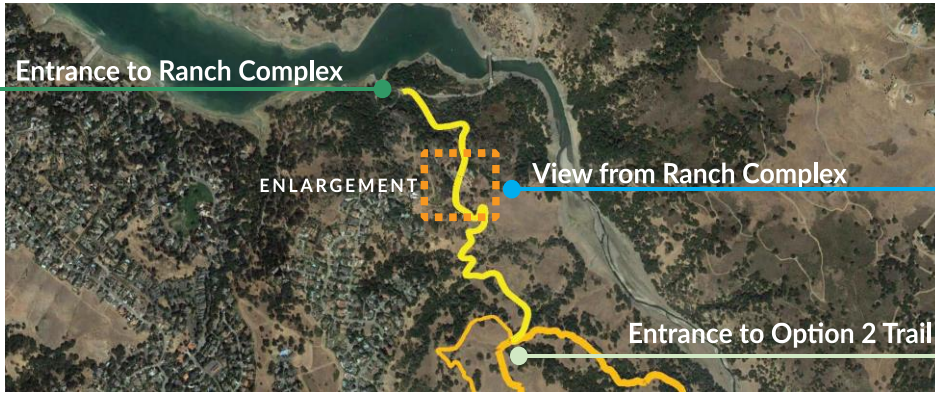
PUBLIC ACCESS ALIGNMENT OPTIONS

Option 1: North / South Trail along creek from Coyote Lake - Harvey Bear County Park to East Dunne Avenue

Option 2: Loop Trail from Coyote Lake - Harvey Bear County Park into Coyote Highlands / Coyote Canyon and back to Coyote Lake

Option 3: Development of staging area at Ranch Complex at East Dunne Avenue, with access connecting south to Option Two





Resource
Surveys
Summer 2018

CEQA
Review
Summer 2018

NRM Plan
Summer 2018

PRC
Meeting
Fall 2018

05 **NEXT STEPS**

The Goal of the Department
is to complete the Plan by
December 2018



QUESTIONS |